
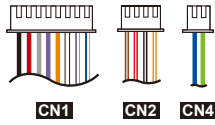

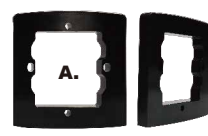


## Contents

### AR-888W:Energy Server

- 1** Products  

- 2** Terminal Cables  

- 3** Allen Key and Screws  

- 4** Easy Install Kit (By Order)  


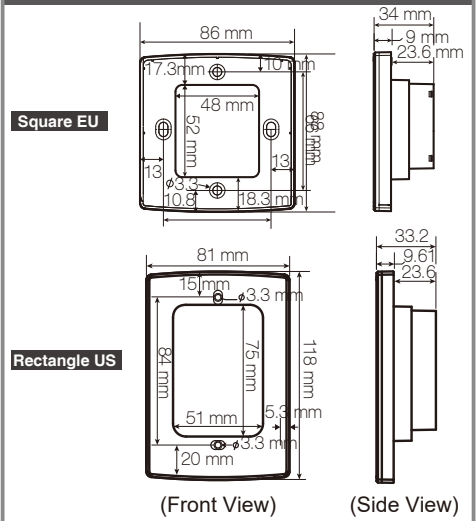
### AR-CPI/CPO-888:Don't Disturb Switch(Indoor/Outdoor)

- 1** Products  

- 2** Tools  

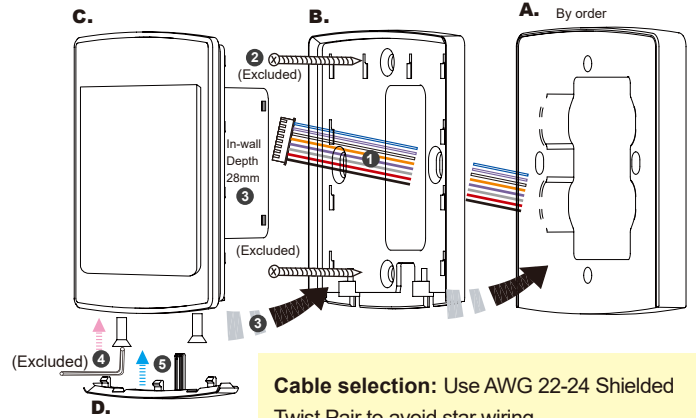
- 3** Easy Install Kit (By Order)  


## 產品尺寸



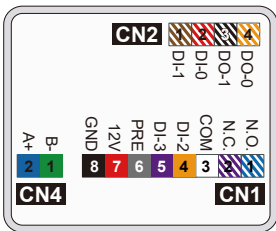
## Installation(AR-888W)

- Pull the cables from the square holes of the eva foam gasket and mounting plate.
- Use a screwdriver to screw the mounting plate **B** onto the wall with Flat Head Cap Phillips Tapping Screws (Excluded, the Installer should prepare before installation).
- Connect the cables to the backside of body **C** and attach **C** to **B** at lower position of **B**. Push **C** up to make the cogging hooked completely.
- Use the Allen key and screws to assemble the body **C** onto the mounting plate **B**. Attach the Back Cover **D** to **C**.
- Turn on the power and LED will light-up and beep will sound.



## Connector Table

### AR-888W:Energy Server



#### Cable: CN1

Wire Application	Pin	Color	Description
Relay Output	1	Blue White	(N.O.)DC24V1Amp
	2	Purple White	(N.C.)DC24V1Amp
	3	White	(COM)DC24V1Amp
DI-2	4	Orange	Negative Trigger Input
DI-3	5	Purple	Negative Trigger Input
Card Present	6	Gray	Transistor OutputDC
Power	7	Thick Red	12V
	8	Thick Black	DC 0V

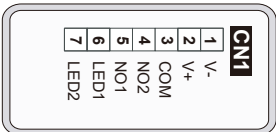
#### Cable: CN2

Wire Application	Pin	Color	Description
DI-1	1	Brown White	Negative Trigger Input
DI-0	2	Red White	Negative Trigger Input
DO-1	3	Black White	Transistor Output
DO-0	4	Orange White	Transistor Output

#### Cable: CN4

Wire Application	Pin	Color	Description
RS485	1	Green	RS-485 (B-)
	2	Blue	RS-485 (A+)

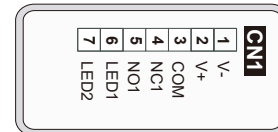
### AR-CPO-888:Outdoor



#### CN1

Wire Application	Pin	Description
Power	1	DC 0V
	2	DC9-24V
COM	3	(COM)DC24V1Amp
Anti-Tamper Switch	4	(NO1)DC24V1Amp
	5	(NO1)DC24V1Amp
LED1	6	Green LED Output 5V/20mA, Max
LED2	7	Red LED Output 5V/20mA, Max

### AR-CPI-888:Indoor

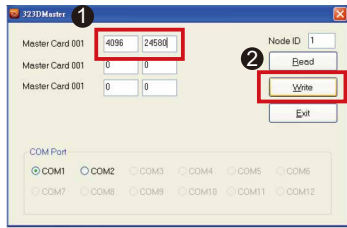



#### CN1

Wire Application	Pin	Description
Power	1	DC 0V
	2	DC9-24V
COM	3	(COM)DC24V1Amp
Anti-Tamper Switch	4	(NO2)DC24V1Amp
	5	(NO1)DC24V1Amp
LED1	6	Green LED Output 5V/20mA, Max
LED2	7	Red LED Output 5V/20mA, Max

## Basic Setting

### MASTER CARD Setting



● Use the MASTER CARD software  323D Master

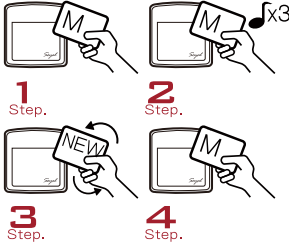
● Input the MASTER CARD number, and press [Write].

● Cut off and transmit the power. Activate master the card number.

● Test

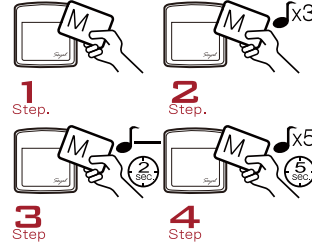
Present the card, and the reader will flash green light 3 times and sound 3 beeps. Then the card becomes MASTER CARD and accesses programming mode. If MASTER CARD is presented again, it will exit programming mode.

### About Master Card/Adding Tag



- 1 Present Master Card
- 2 After 3 short beeps [Access programming mode]
- 3 Present one new card at a time
- 4 Present Master Card [Exit programming mode]

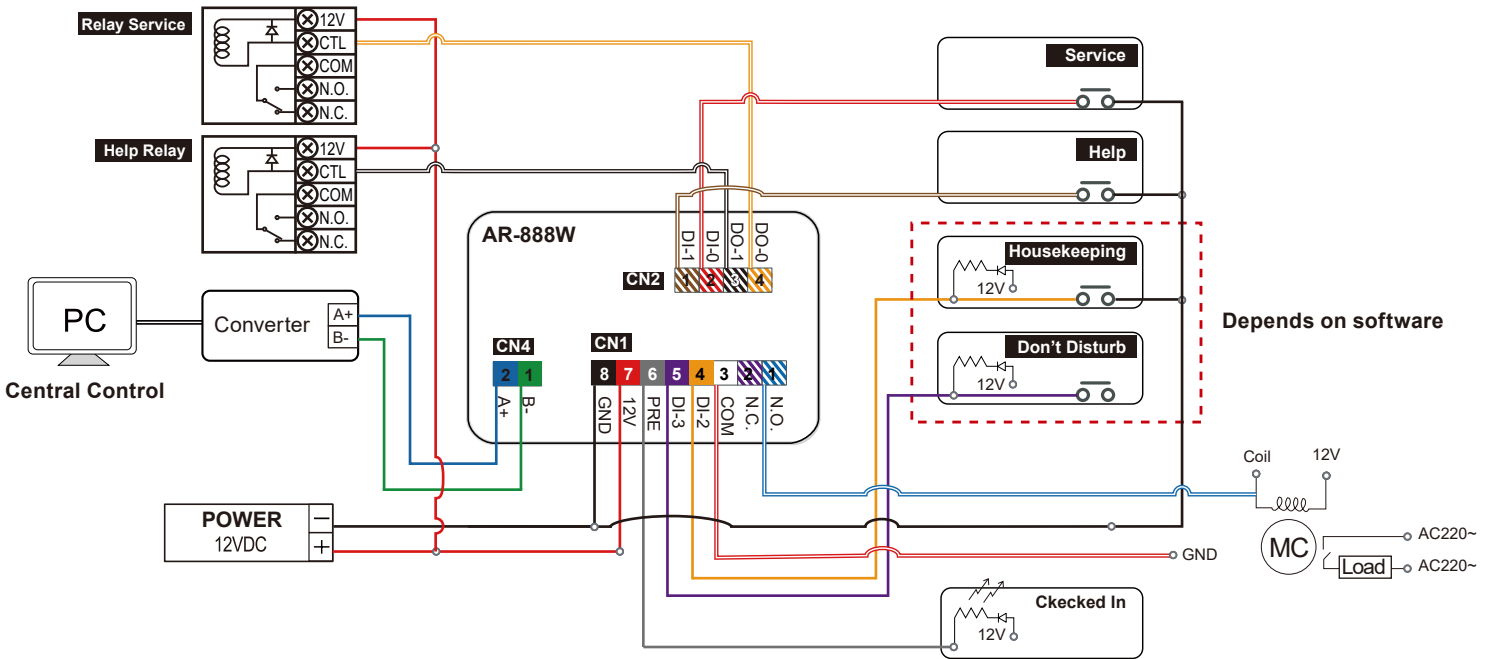
### Deleting All Tags



- 1 Present Master Card
- 2 After 3 short beeps [Access programming mode]
- 3 1 long warning beep after 2sec.
- 4 5 short beeps after 5sec: cards cleared

## Wiring Diagram

### AR-888W



### AR-CPI/CPO-888

